



MERT Values

- Safety
- Client Centered
- Practical Information
- Mutual Respect
- Teamwork
- Flexibility
- Cooperation
- Cultural Awareness
- Communication



1430 Freedom Blvd
Suite F
Watsonville, CA 95076
Phone: 800-952-2335

Santa Cruz County MERTY
Program

MERTY

Mobile Emergency Response
Team
For South County Youth



SANTA CRUZ COUNTY
BEHAVIORAL HEALTH

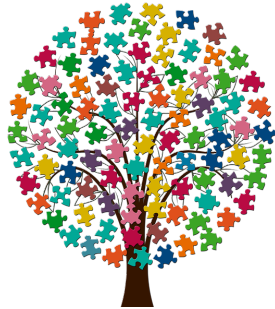
800-952-2335

MERTY Services

MERTY is a Santa Cruz County Behavioral Health crisis Intervention Service for youth of the South County

Services provided regardless of insurance coverage or uninsured

MERTY is currently available Monday through Friday 8:00 am – 5:00 pm, excluding Holidays



MERTY response may include community-based response in collaboration with Law-Enforcement as appropriate to ensure individual, community, and clinician safety.

Who Do We Serve?

- Youth 21 and under experiencing crisis.
- South County Residents
 - Watsonville
 - Corralitos
 - Freedom
 - Rio Del Mar
 - La Selva
- Aptos (South of State Park Drive)

Walk-in Services vs Mobile Field Response

Walk-in services are available In Watsonville at 1430 Freedom Blvd Suite F, Watsonville

Mobile response is available when deemed appropriate.

MERTY has a Behavioral mobile office to meet individuals in the community.

The MERTY Team Services Includes:

- Walk-in and Mobile Crisis intervention
- Clinician will provide crisis assessment, assess for safety, and determine immediate need.
- Clinician can provide short term therapeutic support until youth can be connected to outpatient services.
- Family Partner will provide linkage to follow-up therapeutic services as well as support in connecting to community services to support the family.

